

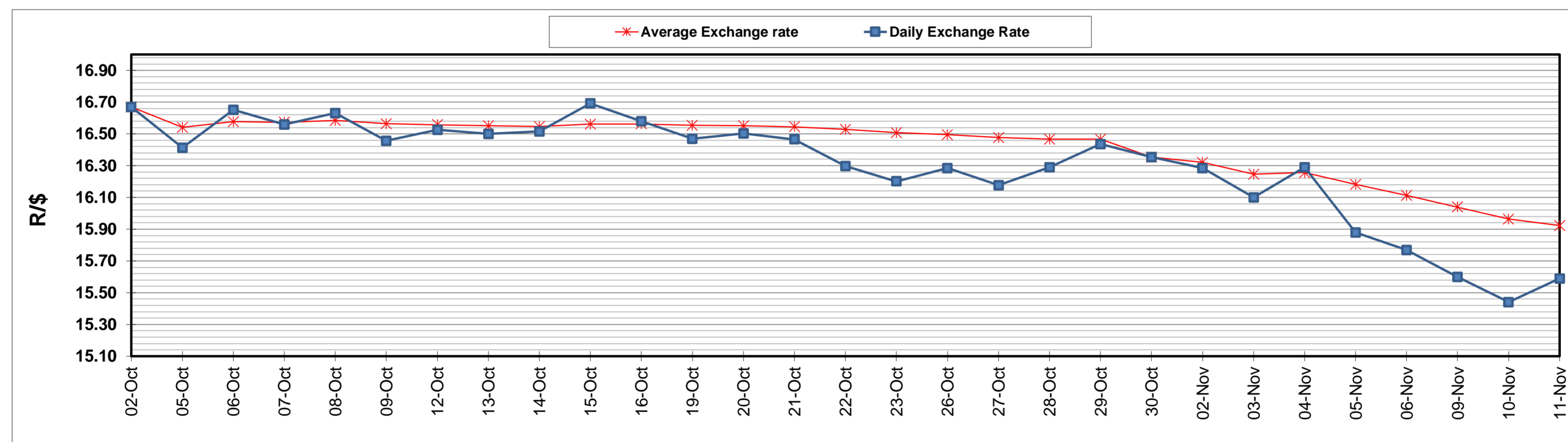
	PETROL 95 ULP	PETROL 93 ULP & LRP	DIESEL 0.05%	DIESEL 0.005%	ILL. PAR.
GAUTENG PUMP PRICE (SA c/l) AS FROM 04/11/2020	1,459.000	1,439.000	-	-	-
WHOLESALE PRICE (SA c/l) AS FROM 04/11/2020	-	-	1,225.560	1,227.960	655.828
SINGLE NATIONAL MAXIMUM RETAIL PRICE	-	-	-	-	818.000
BASIC FUEL PRICE - 11/11/2020 (SA c/l)	506.952	499.740	508.082	509.982	490.490
PRESS RELEASE CONTRIBUTION TO BFP 04/11/2020 - 11/11/2020 (SA c/l)	506.470	496.470	474.630	477.030	451.128
UNIT OVER/(UNDER) RECOVERY - 11/11/2020 (SA c/l)	(0.482)	(3.270)	(33.452)	(32.952)	(39.362)
AVERAGE BASIC FUEL PRICE 30/10/2020 - 11/11/2020	475.307	466.949	468.764	471.681	452.797
AVERAGE UNIT OVER/(UNDER) RECOVERY 30/10/2020 - 11/11/2020	40.163	38.521	9.866	9.016	(6.669)

ANALYSIS MOVEMENT OF AVERAGE OVER/(UNDER) RECOVERY

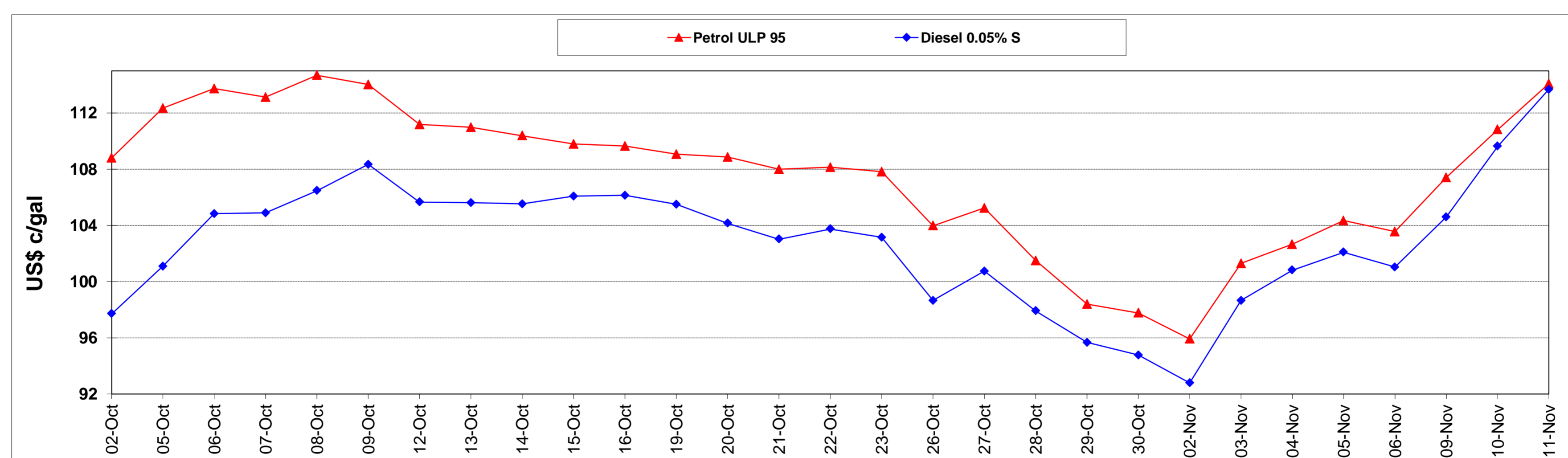
	PETROL 95	PETROL 93	DIESEL 0.05%	DIESEL 0.005%	ILL. PAR.
- MOVEMENT IN INTERNATIONAL PRODUCT PRICES	23.963	22.606	(6.111)	(7.060)	(22.102)
- MOVEMENT IN EXCHANGE RATE	16.200	15.915	15.977	16.076	15.433
AVERAGE UNIT OVER/(UNDER) RECOVERY 30/10/2020 - 11/11/2020	40.163	38.521	9.866	9.016	(6.669)

R/\$ EXCHANGE RATE - (R/\$15.5900 - 11/11/2020)

EXCHANGE RATE USED IN BASIC FUEL PRICE



INTERNATIONAL PRODUCT PRICES OF BASKET USED IN BASIC FUEL PRICE



BASIC FUEL PRICE IN SA CENTS PER LITRE

